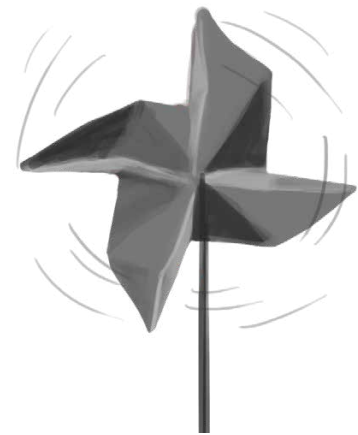
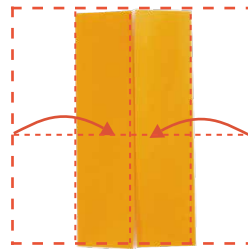
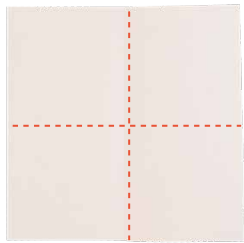


WINDMILL

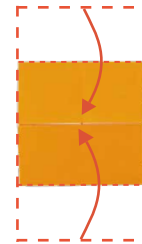
Blowing from mouth or using power of wind, this toy can rotate for playing. It can be decorated for Japanese traditional festival.



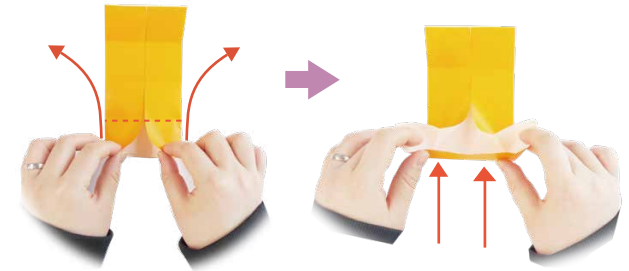
HOW TO FOLD A WINDMILL



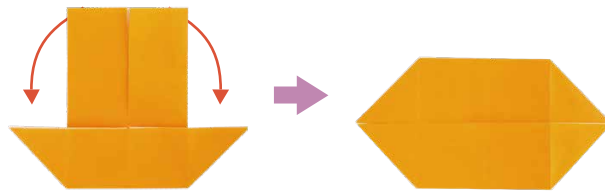
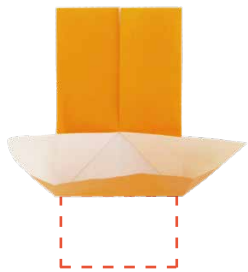
1. Fold to meet the center.



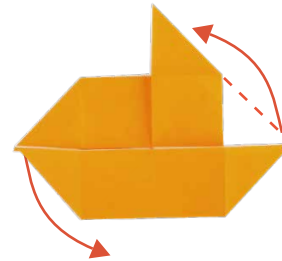
2. Fold to meet the center.



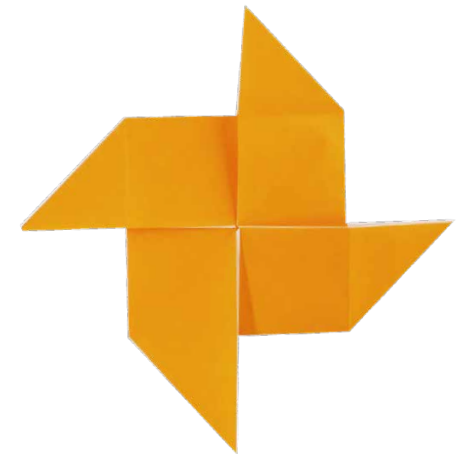
3. Fold in the dotted line.



4. Fold in the line.



5. Fold in the line.



COMPLETE